

# Consistency in Reporting

# **Legislative Appropriations Request Higher Education Consistency Standards**

The following consistency standards were agreed upon by the TASSCUBO Budget Committee on May 25, 2012.  
The intent of these standards is to simplify the LAR process.

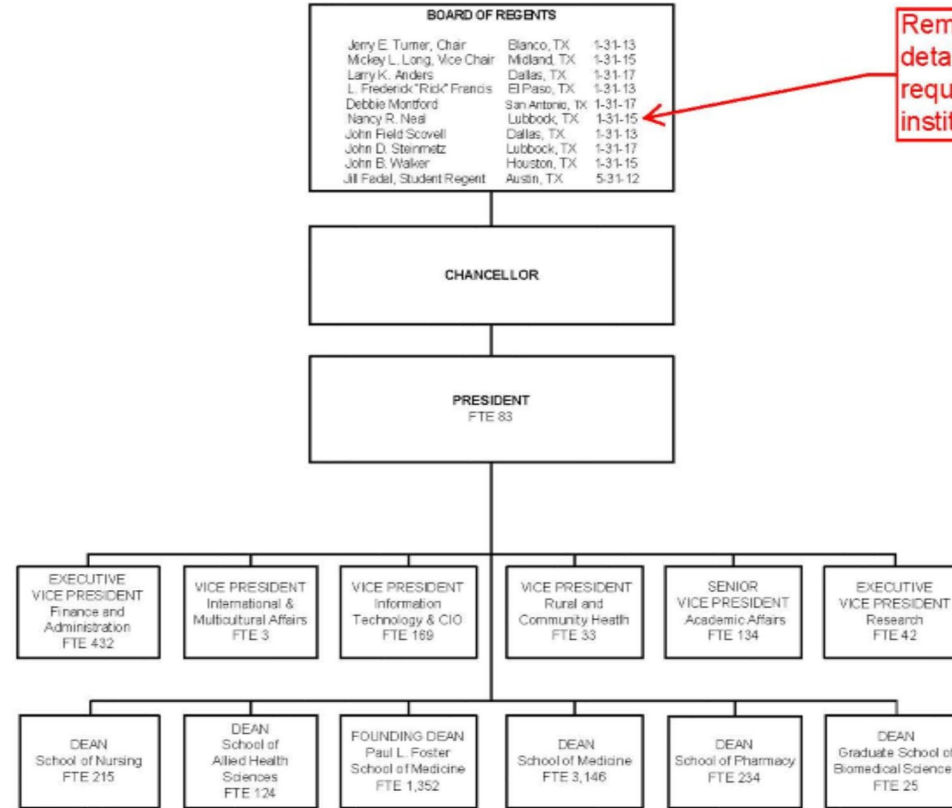
# Administrator's Statement

- ▶ Based on the LAR instructions, Board member information is only required by systems and independent institutions
- ▶ Systems and independent institutions should include a statement similar to the following in the Administrator's statement
  - *The Texas Tech University System is governed by a Board of Regents. The current members of the Board of Regents are included in the Organizational Chart*
- ▶ Eliminate the Board of Regents from the Administrator's statement and include in the Organizational Chart

# Organizational Chart

- ▶ All institutions would include the chain of command from the Board of Regents to the Vice President level of the institution (i.e., Board of Regents, Chancellor, President, Vice President/Provost). For some Health Related Institutions, Deans would be included if they report directly to the President and not to a Provost.
- ▶ Positions below a Vice President Level should be excluded
- ▶ Detailed Board of Regent information would be provided if required by the institution
- ▶ An example of the proposed Organizational Chart changes is attached

# Organizational Chart-1



Remove the Board detail only if not required for the institution.

# Schedule 3A Strategy Request- Formula and Other Common Strategies

- ▶ The following verbiage should be included in the strategy description and justification section for formula funded and other common strategies. Verbiage should not be included in the Internal/External factors section.

# General Academic Institutions-1

## Instruction and Operation Formula

- The Instruction and Operations Formula provides funding for faculty salaries, departmental operating expense, library, instructional administration, research enhancement, student services and institutional support.
- The funds are distributed on a weighted semester credit hour basis. The rate per weighted semester credit hour is established by the Legislature each biennium.

## Teaching Experience Supplement

- The Teaching Experience Supplement formula provides an additional weight of 10 percent to lower and upper division semester credit hours taught by tenured and tenure-track faculty.
- The Infrastructure Support formula distributes funding associated with plant-related formulas and utilities. This formula is driven by the predicted square feet for universities' educational and general activities produced by the Coordinating Board Space Projection Model.

## Infrastructure Support

- The portion of the formula related to utilities is adjusted to reflect differences in unit costs for purchased utilities, including electricity, natural gas, water and wastewater, and thermal energy.



# General Academic Institutions-2

## Texas Research University Fund

- The Texas Research University Fund provides funding to The University of Texas at Austin and Texas A&M University to support faculty to ensure excellence in instruction and research.
- A legislatively determined amount of funding is allocated based on each institution's average research expenditures for the previous three-year period as reported to the Higher Education Coordinating Board.

## Texas Comprehensive Research Fund

- The Texas Comprehensive Research Fund provides funding to promote increased research capacity at eligible general academic teaching institutions including those other than The University of Texas at Austin, Texas A&M University or any institution designated as an emerging research university under the Higher Education Coordinating Board's (THECB) accountability system.
- Funding is to be expended for the support and maintenance of educational and general activities, including research and student services, that promote increased research capacity.
- A legislatively determined amount of funding is allocated based on the average amount of restricted research funds expended by each institution per year for the three preceding state fiscal years as reported to THECB.



# General Academic Institutions-3

## Core Research Support Fund

- The Core Research Support Fund is established to provide funding to promote increased research capacity at those institutions designated as an emerging research university under the Higher Education Coordinating Board's (THECB) accountability system.
- Funding is to be expended for the support and maintenance of educational and general activities, including research and student services, that promote increased research capacity.
- A legislatively determined amount of funding is appropriated to eligible institutions as follows: (1) 50 percent based on the average amount of restricted research funds expended by each institution per year for the three preceding state fiscal years as reported to THECB; and (2) 50 percent based on the average amount of total research funds expended by each institution per year for the three preceding state fiscal years as reported to THECB.

# Health Related Institutions -1

## Instruction and Operation Formula

- The Instruction and Operations Formula provides funding for faculty salaries, departmental operating expense, library, instructional administration, student services and institutional support. (Insert one of the following sentences here based on the strategy.)
  - *The formula for this strategy is based on weighted medical student headcounts.*
  - *The formula for this strategy is based on weighted dental student headcounts.*
  - *The formula for this strategy is based on weighted biomedical student full time equivalent.*
  - *The formula for this strategy is based on weighted nursing student full time equivalent.*
  - *The formula for this strategy is based on weighted pharmacy student full time equivalent.*
  - *The formula for this strategy is based on weighted public health student full time equivalent.*
  - *The formula for this strategy is based on weighted allied health student full time equivalent.*
  - *The formula for this strategy is based on weighted biomedical informatics student full time equivalent.*
- The rate per weighted student headcount or full time equivalent is established by the Legislature each biennium.

# Health Related Institutions -2

## Infrastructure Support

- The Infrastructure Support formula distributes funding associated with plant support and utilities. This formula is driven by the predicted square feet for health related institutions produced by the Coordinating Board Space Projection Model.
- Because the Space Projection Model does not account for hospital space, separate infrastructure funding for hospital space at the institution is included in the total funding for hospital and patient care activities. (This paragraph would only be included for UTMB, UTMD Anderson and UTHSC Tyler).

## Research Enhancement

- The Research Enhancement formula allocates a fixed amount per year to each institution in addition to a legislatively determined percentage of the research expenditures as reported to the Texas Higher Education Coordinating Board. These funds are used to support the research activities of the institution.

## Graduate Medical Education

- The Graduate Medical Education formula allocates funding based on the number of medical residents. These funds shall be used to increase the number of resident slots in the State of Texas as well as for faculty costs related to GME.

# Health Related Institutions -3

## Dental Loans

- For institutions with Dental Schools add: Section 61.910 of the Texas Education Code requires that 2% of the resident dental school tuition be transferred for repayment of student loans of dentists subject to eligibility determinations established by the Texas Higher Education Coordinating Board.

## Permanent Health Fund for Higher Education (Education Code, Section 63.001)

- This strategy includes the institution's allocation of the Permanent Health Fund for Higher Education established by Section 63.001 of the Texas Education Code. The purpose of these funds includes medical research, health education, treatment programs, or state matching funds for the eminent scholars fund program.

# Health Related Institutions -4

## Other Permanent Health Funds (Education Code, Section 63.101)

- Funding for this strategy is derived from annual distributions of this institution's permanent endowment fund established Section 63.101 of the Texas Education Code. These are appropriated for research and other programs that are conducted by the institution and that benefit the public health or for state matching funds for the eminent scholars fund program.
- Note: UTHSC San Antonio, UTEP, TTUHSC El Paso, TTUHSC (not El Paso) and TAMU HSC have additional purposes in Sec. 63.102(c) that should be added as appropriate.

# All Institutions

## Staff Group Insurance

- This strategy is to provide proportional share of staff group insurance premiums paid from Other Educational and General funds.

## Worker's Compensation

- The strategy funds the Worker's Compensation payments related to Educational and General funds.

## Texas Public Education Grants

- This strategy represents tuition set aside for the Texas Public Education Grants program as required by Section 56.033 of the Texas Education Code.

# Schedule 3A- Strategy Request- Non-formula Support

- ▶ Schedule 9, non-formula item Information should be considered the primary schedule for all continuing non-formula support item (formerly special item) requests
- ▶ The mission statement from Schedule 9 should be used as strategy description and justification on Schedules 3A
- ▶ In the Internal and External Factors Section, use the following statement:
  - *Additional information for this strategy is available in Schedule 9, non-formula Item Information.*